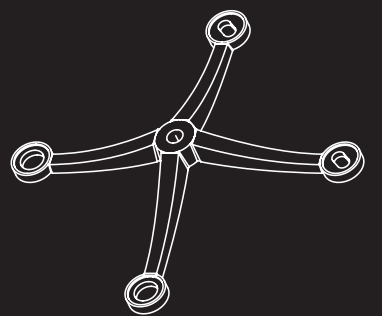
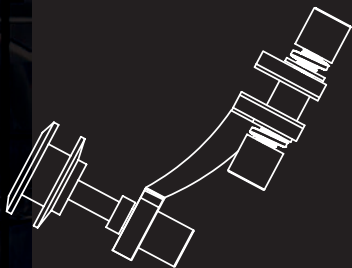




Adler
Spider Fittings





Adler Spider Fitting Technical Data

1. SpiderGlassFitting be designed, manufactured and tested by Adler Glaserei GMBH Germany
2. The spider fittings are manufactured using the lost wax casting method with 304 or 316 grade stainless steel with a tensile strength of 600 MPA providing a flexible connection between glass and supporting system. The fitting's arms are designed to support a maximum loading and allow flexibility to reduce the stress around the glass holes.
3. The spider fitting assembly consists of the following parts:
 - 3.1. Four countersunk ball joints are the bolting members which are manufactured from 304 or 316 grade stainless steel with a tensile strength of 600 MPA and an M14 external thread complying with the British standard BS3643 as well as the European standards (en).
 - 3.2. The spider fittings are protected from direct contact with the glass by an insulating material non compressible which is white in color and manufactured to confort to the European standards (en).
 - 3.3. A M14 Lock Nut is manufactured from 304 or 316 grade stainless steel with an internal thread complying to BS3643, is used to clamp the articulated swivel to the Spider Fitting.
 - 3.4. Non-compressible vulcanized fiber gasket Ø32mm O.D. X Ø11mm I.D X 0.8mm thick insulates between metal to metal surfaces to eliminate undue noise.
 - 3.5. A washer Ø36mm O.D X Ø14mm I.D X 2.5mm thick, manufactured from 304 or 316 grade stainless stell with a tensile strenght of 600 MPA, distributes the clamping load

evenly to the spider fitting as well as providing an aesthetic quality.

- 3.6. An M10 spring washer manufactured from 304 or 316 stailless steel acts as a lock mechanism to secure the Nut in place ensuring full tightness for long periods of time.
- 3.7. The articulated spider assembly is fastened securely by an M10 AGA around headed Nut. manufactured from 304 or 316 grade stainless steel with an internal thread complying to BS3643. An M6 allen key recess is provided to ensure maximum torque load can be applied to the spidr assembly.



Fin Spider Fitting F2004 CV



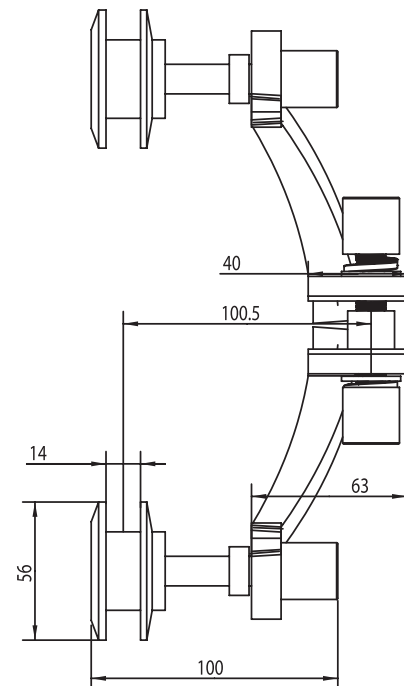
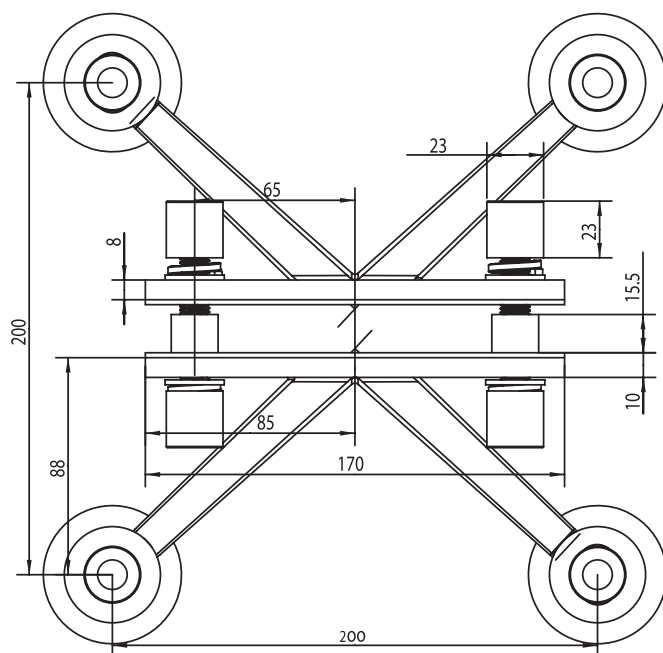
Four arms spider fitting used to attach four inline glass panels to structural center fin
Comes with routels and two stainless steel threaded studs and two matching cap nuts with washers.

Material: Stainless steel grade available 304,316

Finishing available :

*satin stainless steel –sss

*polished stainless steel-pss



Adler

Fin Spider Fitting F2003 CV



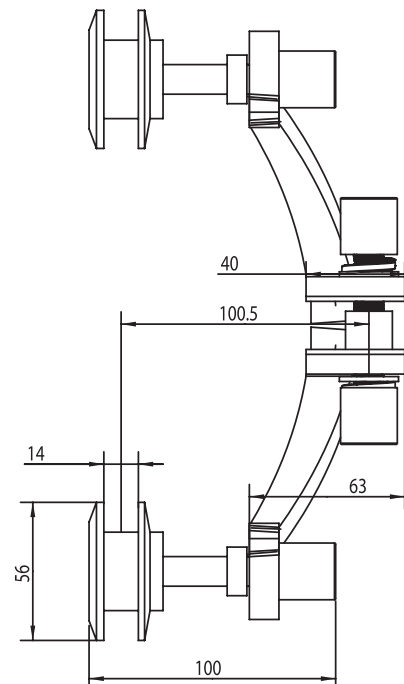
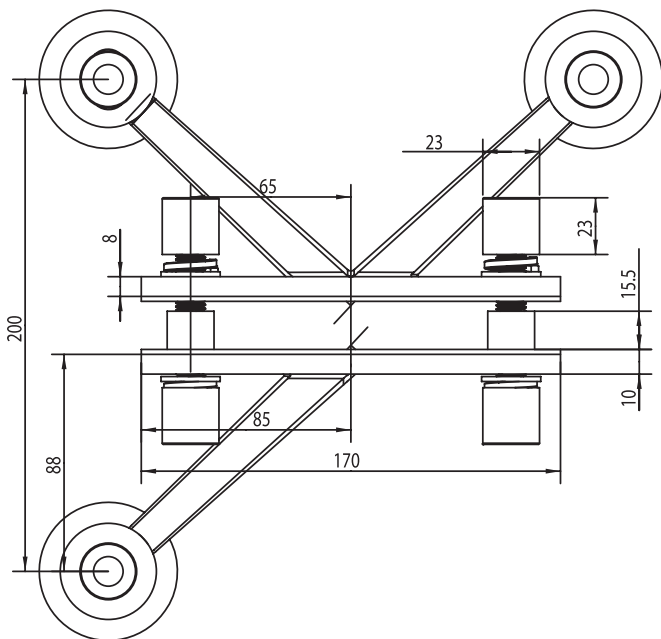
Three arms spider fitting used to attach three inline glass panels to structural center fin
Comes with routels and two stainless steel threaded studs and two matching cap nuts with washers.

Material: Stainless steel grade available 304,316

Finishing available :

*satin stainless steel –sss

*polished stainless steel-pss



Fin Spider Fitting F2002 CV 180°



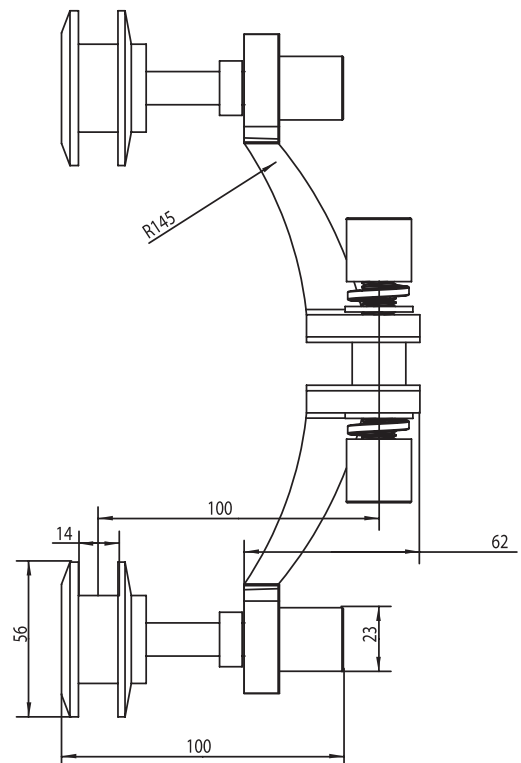
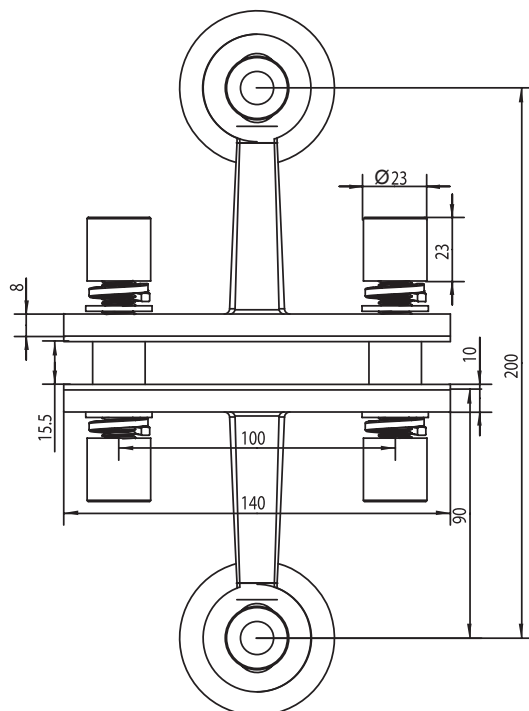
Tow arms spider fitting used to attach tow inline glass panels to structural glass fin
Comes with routels and two stainless steel threaded studs and two matching cap nuts with washers.

Material: Stainless steel grade available 304,316

Finishing available :

*satin stainless steel –sss

*polished stainless steel-pss



Fin Spider Fitting F2002 CV 90°



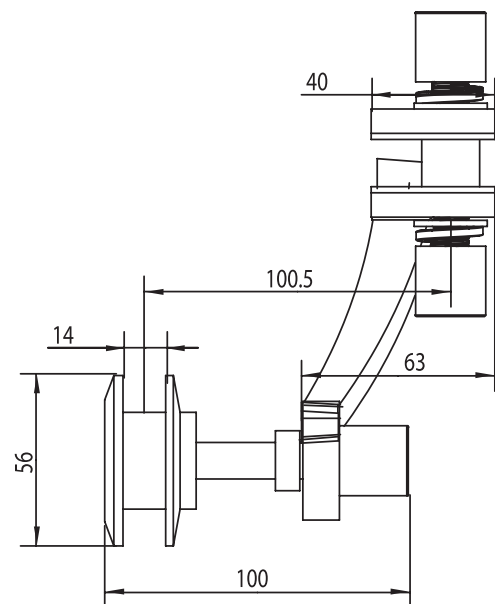
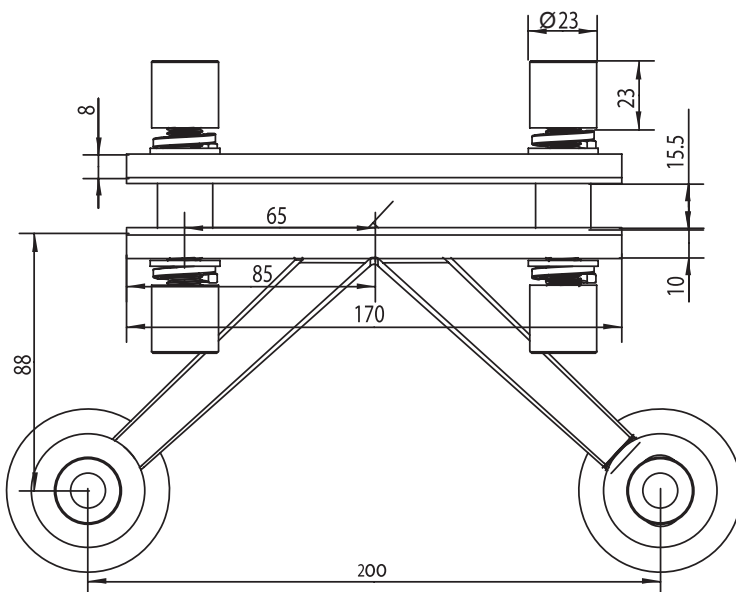
Two arms spider fitting used to attach two glass panels to wall or structural glass fin. Comes with routels and stainless steel plate and two stainless steel threaded studs and two matching cap nuts with washers.

Material : Stainless steel grade available 304,316

Finishing available :

*satin stainless steel –sss

*polished stainless steel-pss



Fin Spider Fitting F2001 CV 90°



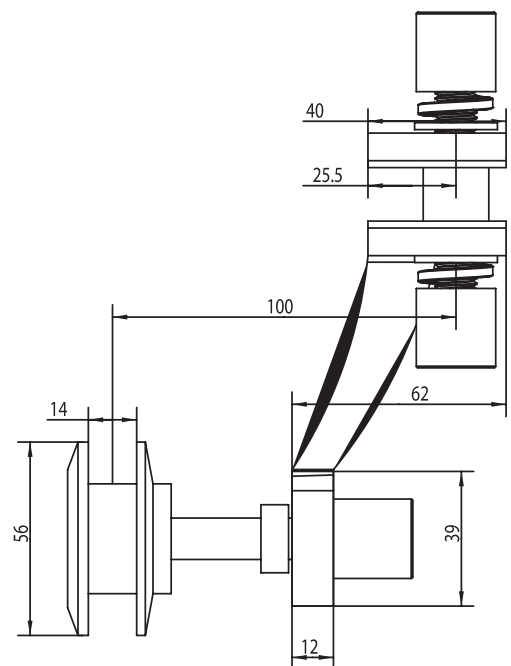
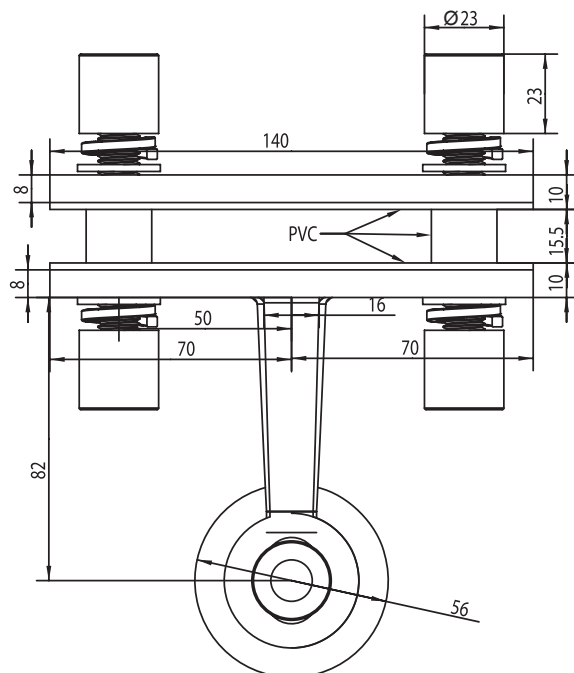
One arm spider fitting used to attach single glass panel to wall or structural glass fin
Comes with stainless steel plate and two stainless steel threaded studs and two matching cap nuts with washers.

Material : Stainless steel grade available 304,316

Finishing available :

*satin stainless steel –sss

*polished stainless steel-pss



Adler

structural Spider Fitting SZ 2004



Four arms fitting is used to attach four inline glass panels to a structural center post, Comes with routels and connector to suit your structural design.

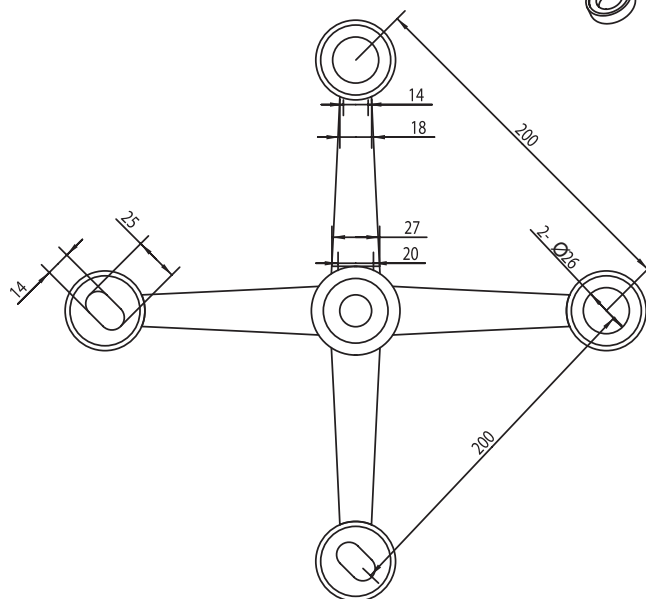
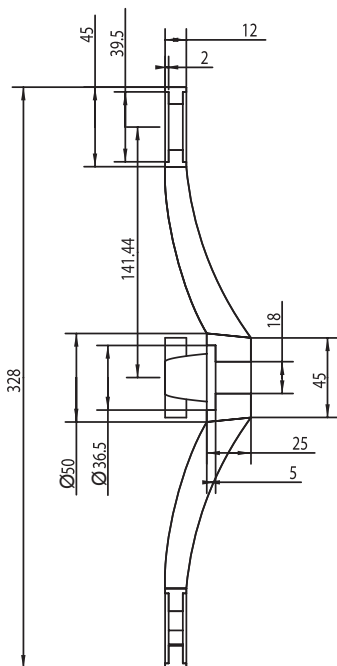
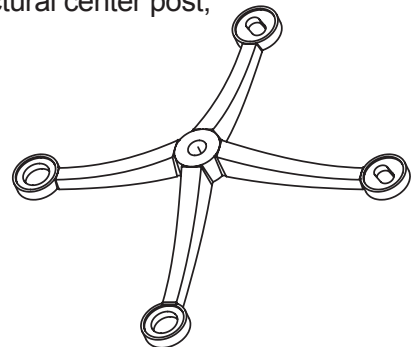
Material: Stainless steel grade available 304,316

Finishing available :

*satin stainless steel –sss

*polished stainless steel-pss

Size: 200 / 250 mm



structural Spider Fitting SZ-2003



Three arms fitting is used to attach three inline glass panels to a structural center post, Comes with routels and connector to suit your structural design.

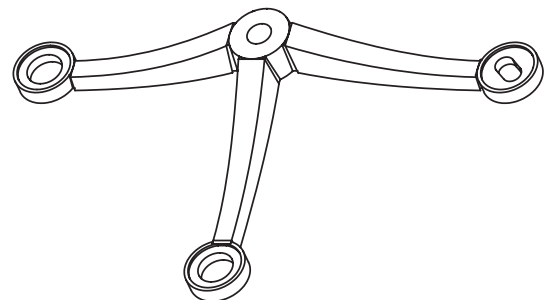
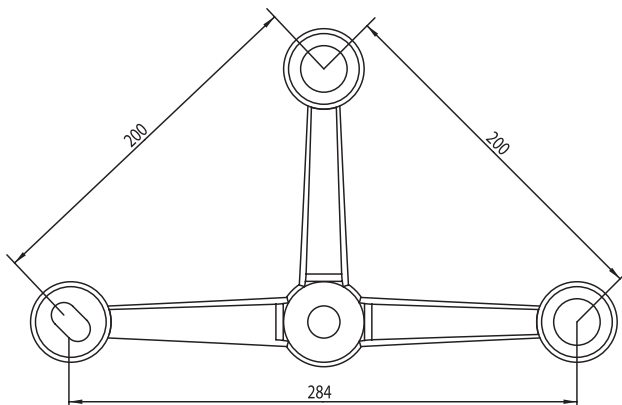
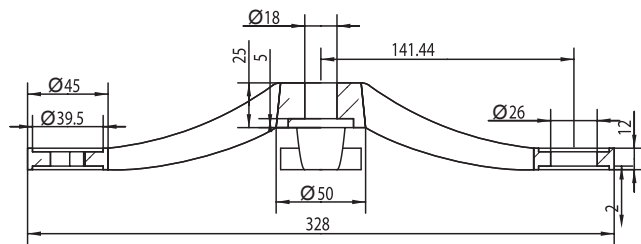
Material: Stainless steel grade available 304,316

Finishing available :

*satin stainless steel –sss

*polished stainless steel-pss

Size: 200 / 250 mm



Adler

structural Spider Fitting SZ 2002-90°



Two arms fitting is used to attach two inline glass panels to a structural center post,
Comes with routels and connector to suit your structural design.

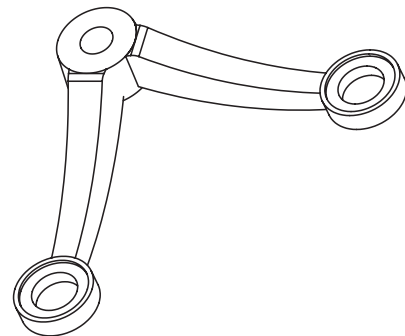
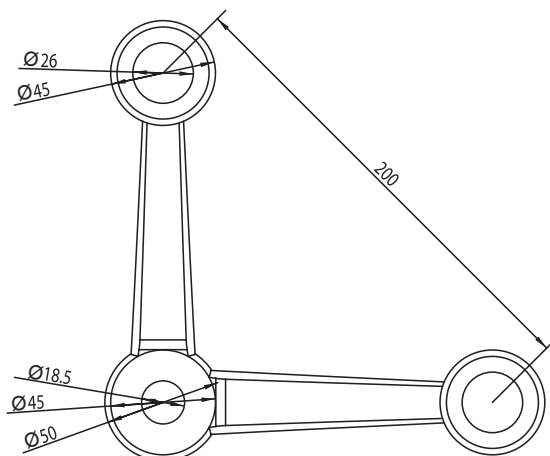
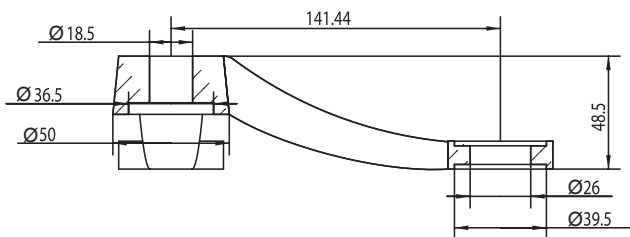
Material: Stainless steel grade available 304,316

Finishing available :

*satin stainless steel –sss

*polished stainless steel-pss

Size: 200 / 250 mm



structural Spider Fitting SZ 2002-180°



Two arms fitting is used to attach two inline glass panels to a structural center post, Comes with routels and connector to suit your structural design.

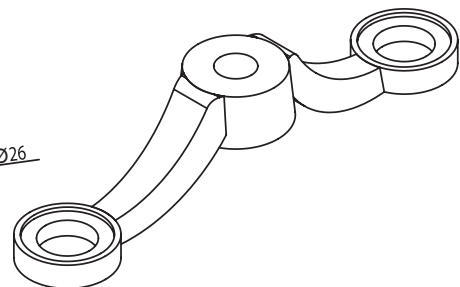
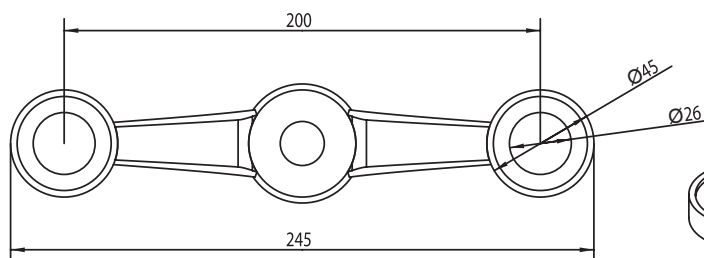
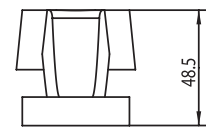
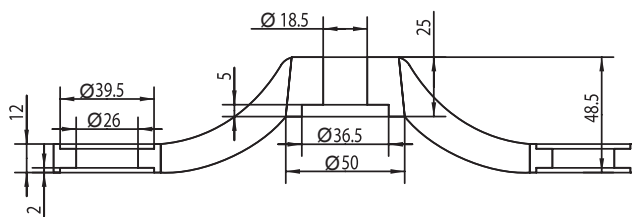
Material: Stainless steel grade available 304,316

Finishing available :

*satin stainless steel –sss

*polished stainless steel-pss

Size: 200 / 250 mm



Adler

structural Spider Fitting SZ-200-5-90°



One long arm fitting is used to attach single glass panel to a structural end post,
Comes with routels and connector to suit your structural design.

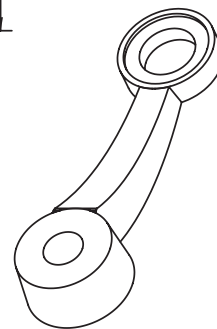
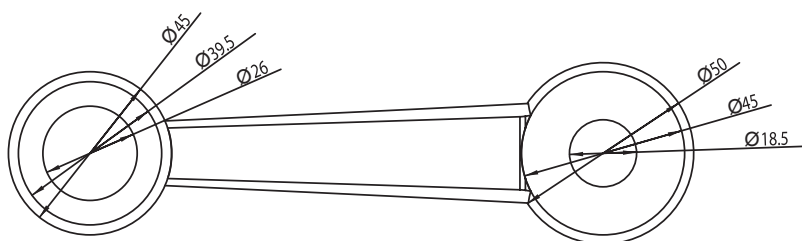
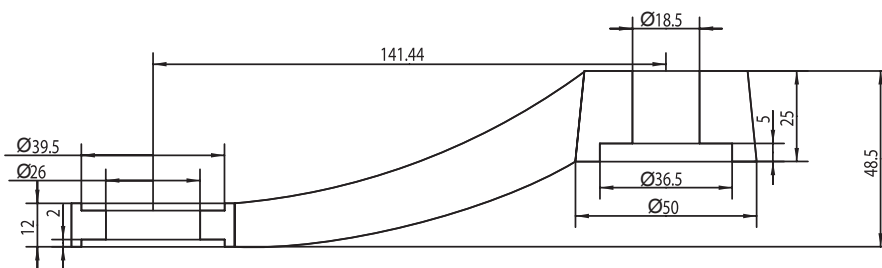
Material: Stainless steel grade available 304,316

Finishing available :

*satin stainless steel –sss

*polished stainless steel-pss

Size: 141.44 / 177 mm



structural Spider Fitting SZ-100-5-180°



One arm fitting is used to attach single glass panel to a structural end post,
Comes with routels and connector to suit your structural design.

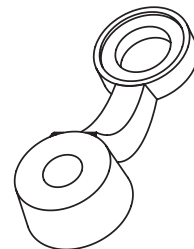
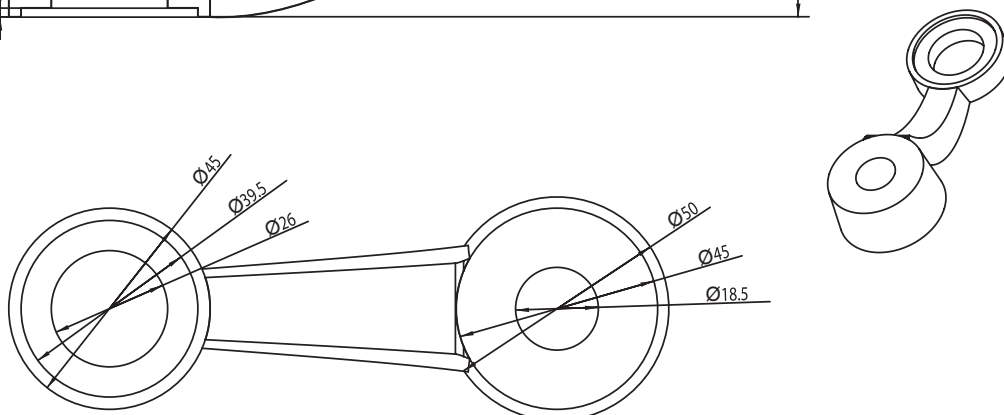
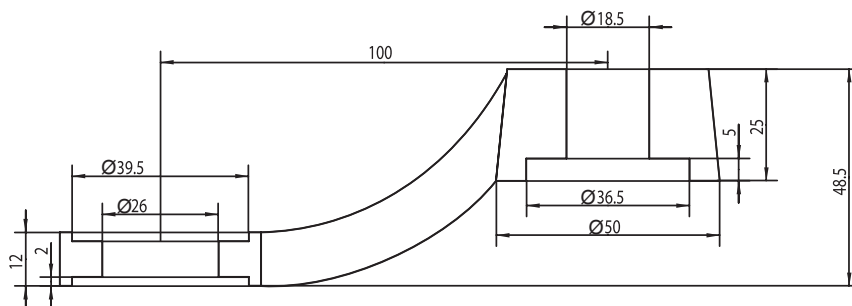
Material: Stainless steel grade available 304,316

Finishing available :

*satin stainless steel –sss

*polished stainless steel-pss

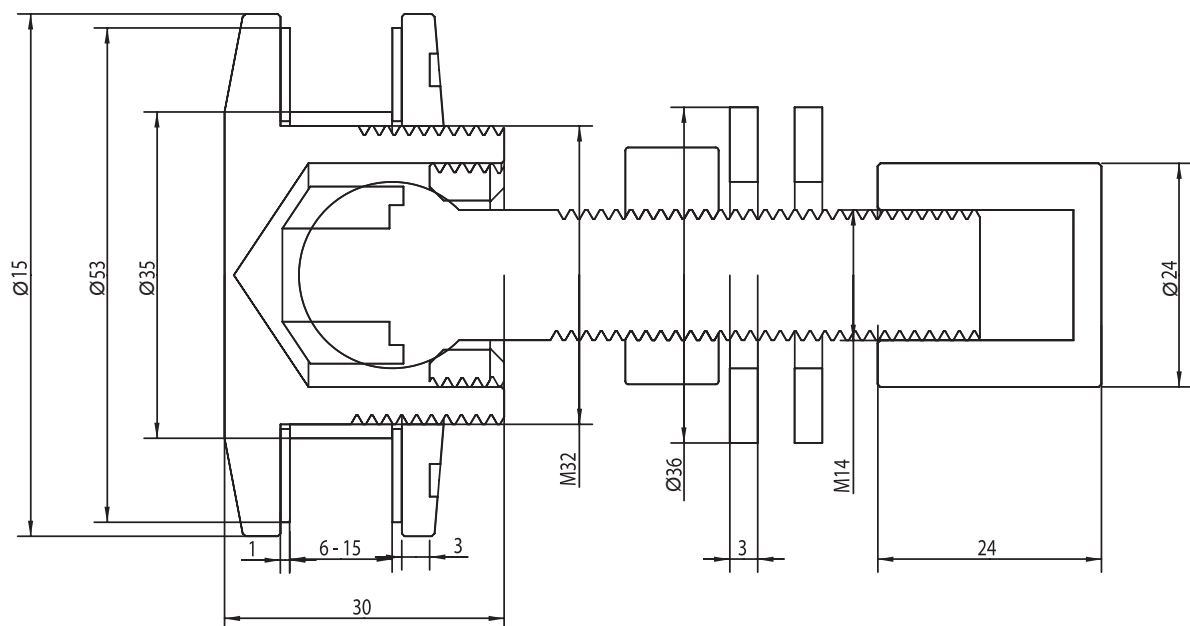
Size: 100 / 125 mm



Routels SZ T02-15

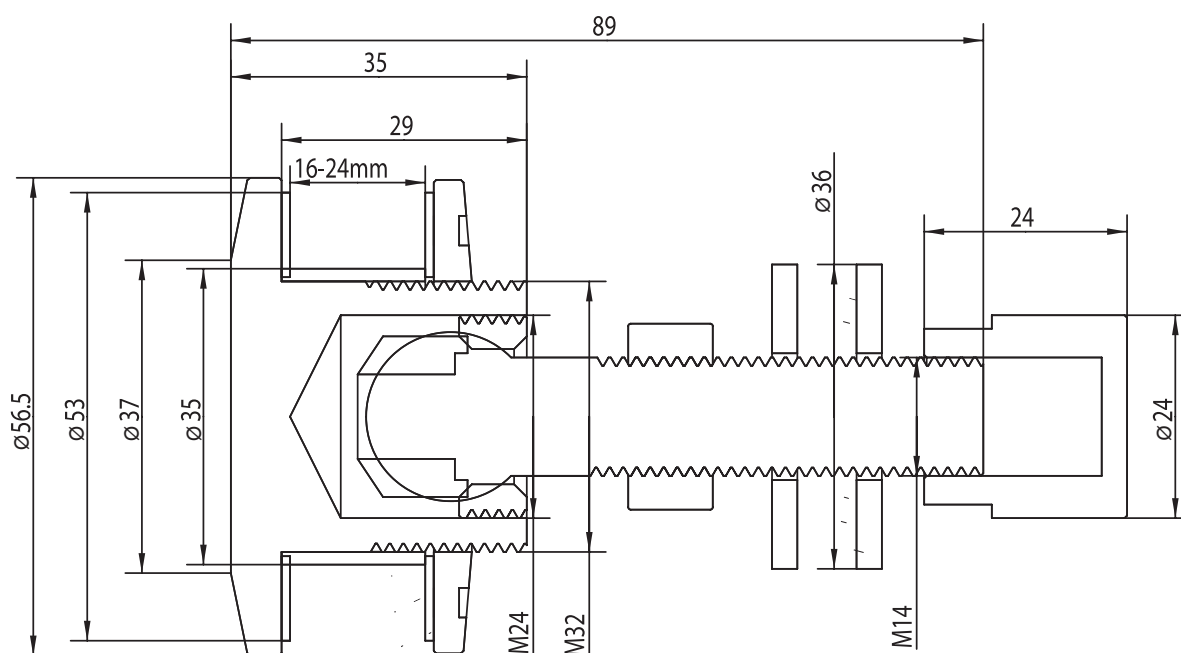


These are also known as routels, articulated bolts, swivel bolts etc. the head of the swivel glass attachment can tilt up to 6 degrees in any direction on its ball and socket joint. this allows for any stress applied to the glass to be more evenly distributed across the entire panel of glass rather than concentrating at the hole. these also can be used for fixing single or double glazing of various thicknesses, these are typically used in conditions where the glass will be subject to live loads. these bolts are made in stainless steel 304 or 316 grade,



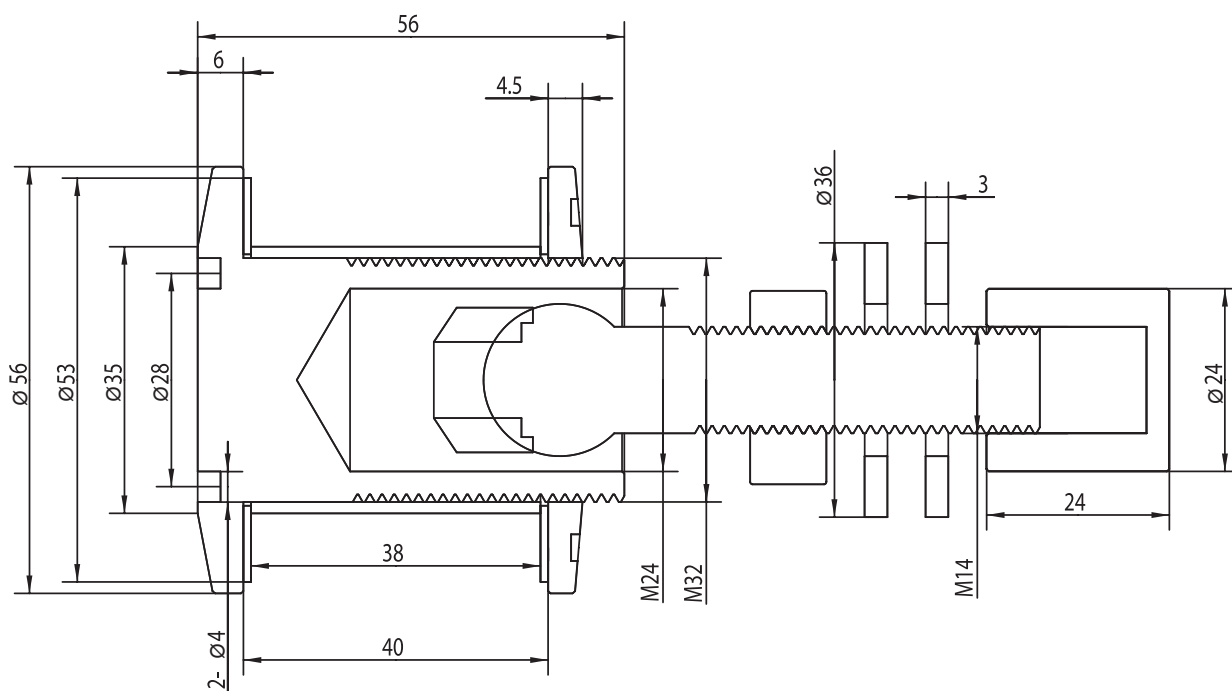
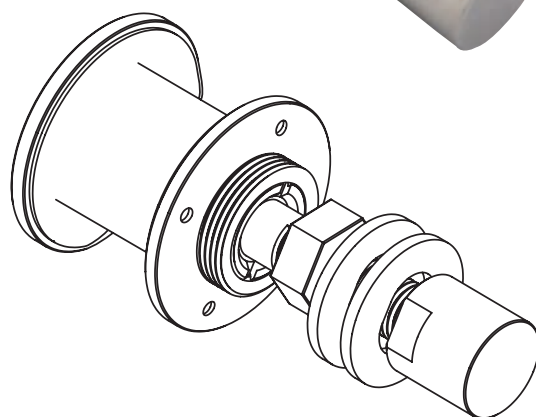


Routels SZ T02-24



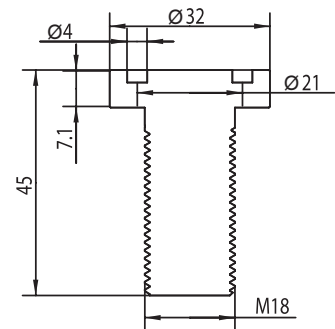
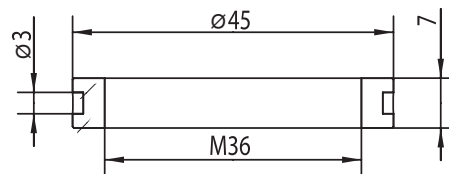
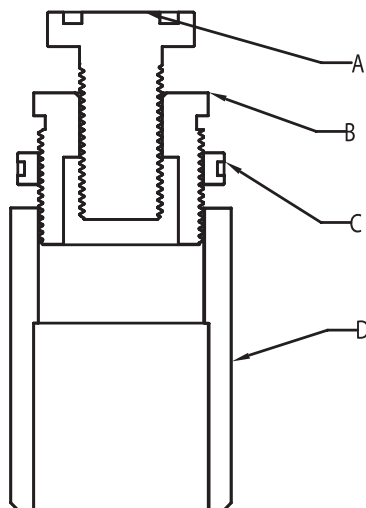
Adler

Routels SZ T02- 40

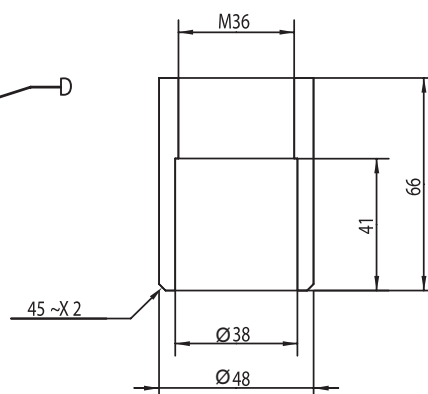


Connector SZZ02

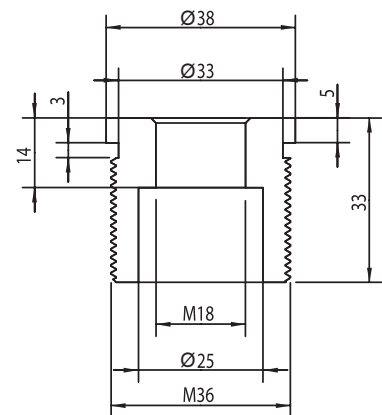
Accessories and add fittings required for the entire structure are also available ,some of these parte are custom designed and made for specific projects .the material used depends on the specific requirements of the project or the application , some of the parts are stainless steel 304 or 316 grade ,however MS ,carbon steel ETC is also used for different applications .



A



D



B

Adler



Rod Lock & Tension Rod



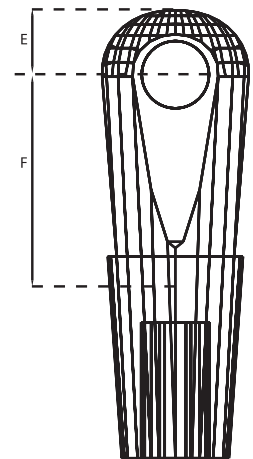
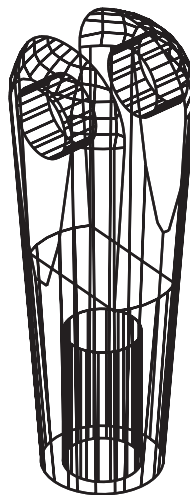
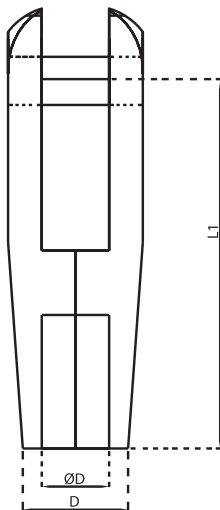
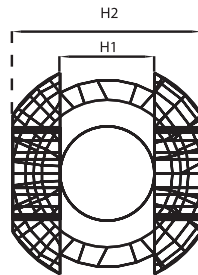
These are also known as tension rod structural fitting , used for giving a very light weight look to the glass facade ,can be combined with a cut to length tension rod to achieve the support required by the design of your glass facade.

End fitting are sold in a set of tow (one right hand thread and one left hand thread). when mated with tension rods shown below (sold separately) ,adjustments in or out can be made easily by simply rotating the rod ,the adjustment is secured in place with a locking collar.

different diameters are available for different load requirements , tension rods are available in stainless steel 304 or 316 grade .



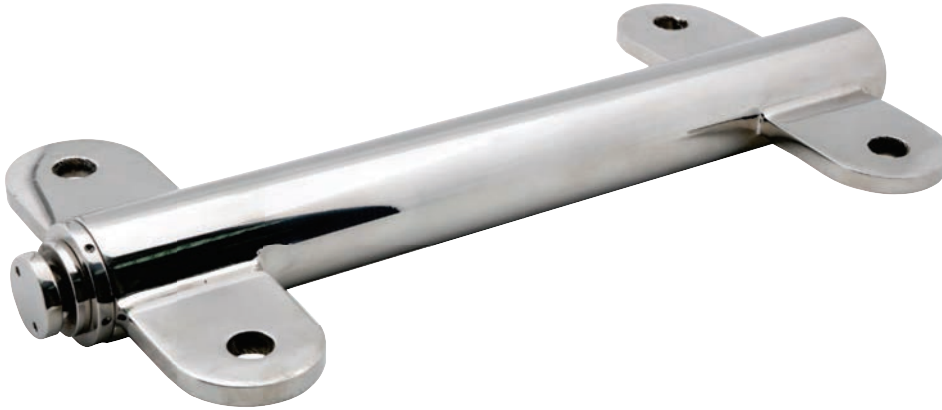
Rod Lock & Tension Rod



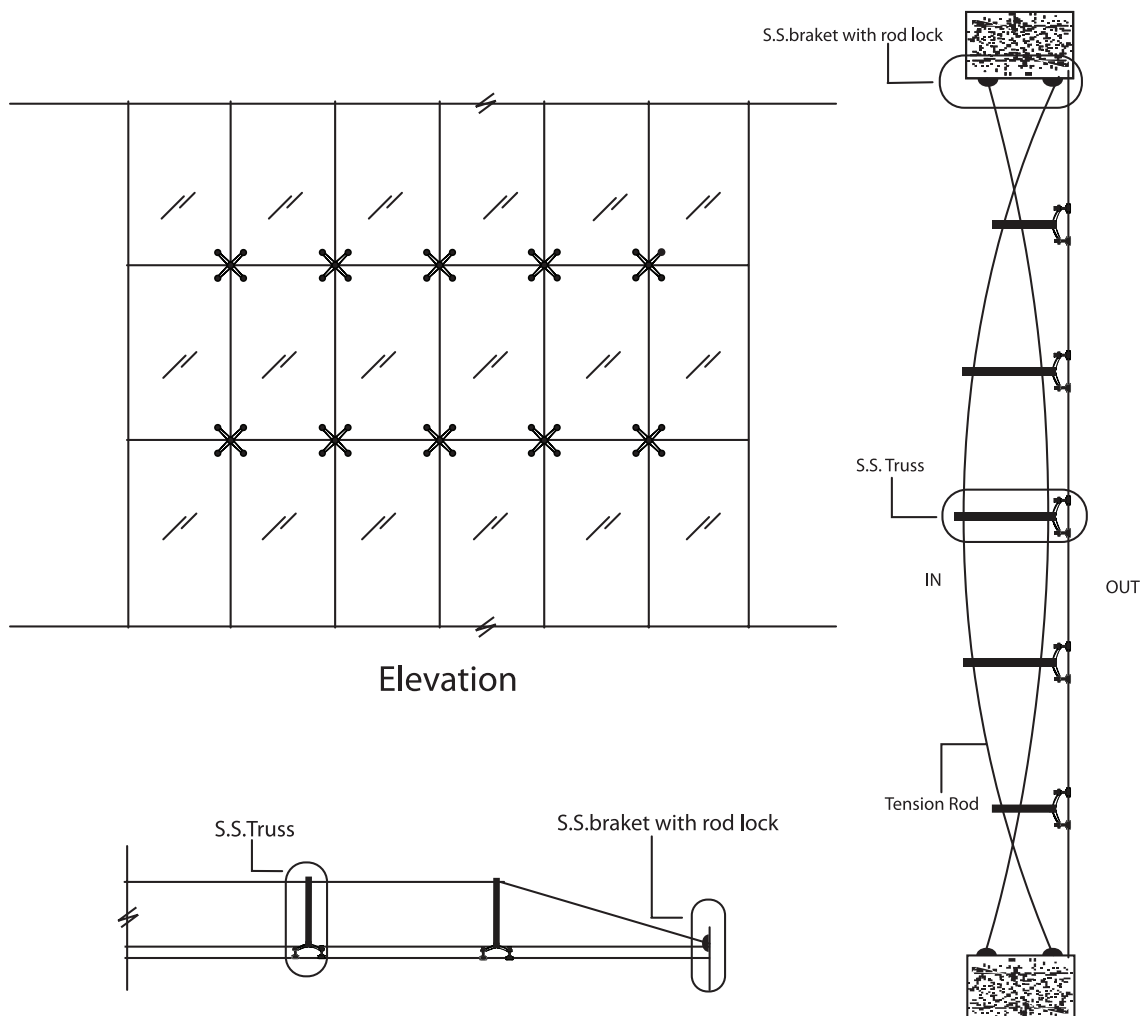
Type Mode	ØD	E	F	H1	H2	L1	D	Sinlge Side Adjustment
RL - 12	Ø12	16	26	13.2	27	68	14.8	± 12.5
RL - 14	Ø14	16	26	13.2	27	68	14.8	± 12.5
RL - 16	Ø16	17.5	41	16	35	88	15.8	± 12.5
RL - 18	Ø18	17.5	41	16	35	88	15.8	± 12.5
RL - 20	Ø20	21	42	17.1	41	90	17.8	± 14
RL - 22	Ø22	21	42	17.1	41	90	17.8	± 14
RL - 25	Ø25	21	42	17.1	41	90	17.8	± 15
RL - 30	Ø30	35	48	25.6	62	105	24.5	± 15

Adler

Truss



These are also known as tension rod truss, this is used along with tension rods and tension cables and is the main element for the tension rod or tension cable structure. the length, and diameter and fixing arrangements are provided as per the requirements of the project specification. pressure pipes are available in stainless steel 304 or 316 grade.





Adler Spider Fitting Analysis

Description:

Spider fittings - 200MM

Available in **Structural & Fin - Type**

Sizes:

- Four (4) Legged
- Three (3) Legged
- Two (2) Legged (Available in 90° & 180°)
- One (1) Legged

Routels

Design:

- T02
- L01
- 220

Materials: Stainless Steel

Grade Available:

- Austenitic High grade 304 Stainless Steel SUS
- Austenitic High grade 316 Stainless Steel SUS (upon request)

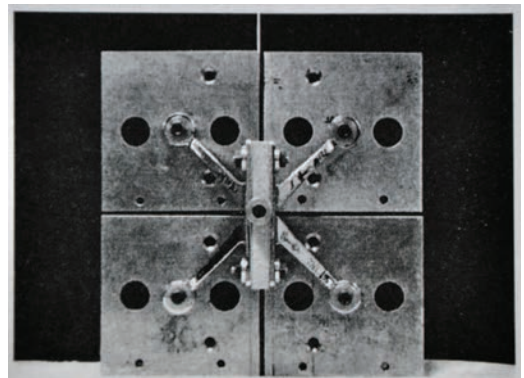
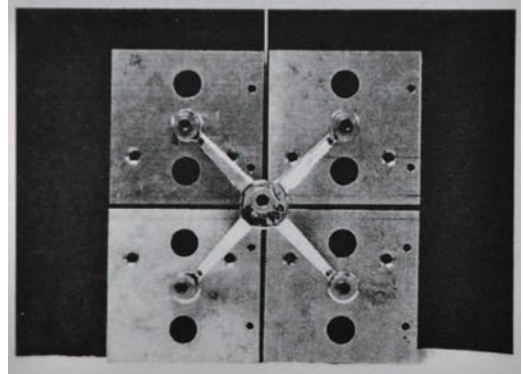
Finish Available:

- Stainless Steel Mirror Finish
- Stainless Steel Stain Finish

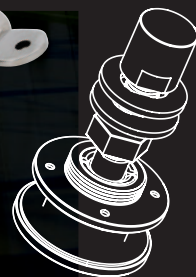
200MM Sample Loading Capacity Test Specification:

- Axial Loading Capacity of Single Legged
- 2500 N

- Radial Loading Capacity of Single Legged
- 1200 N



Adler





Adler

Spider Fittings

A.D.L.E.R Glaserei GmbH

Website: www.isogla-adler.de

FIDICINTRABE 3 10965 BERLIN, GERMANY

Agent in Middle East & Africa, Al Huloul Al Mamaryah Bldg. Material

Tel: +971 6 534 6246, Fax: +971 6 534 6757, P.O.Box: 62243

E-mail: alhuloul@emirates.net.ae