

Adler



ADLER Glaserei is one of the biggest and most established companies in Berlin Germany dealing with various products such as, metal and timber door & window hardware and glass fitting and accessories & Surface Protection Tape, Structural & Glazing Tapes

This is to conform that Adler Products were manufactured in Germany, Singapore and China under the license of ADLER Glaserei GmbH with full supervision and control. The entire Adler products aforementioned are complying with European Standard EN-1154

A.D.L.E.R Glaserei GmbH
Website: www.adler-glaserei.com
E mail : info@adler-glaserei.com/gm@adler-glaserei.com
FIDICNTRABE 3 10965 BERLIN. GERMANY

GLASS DOOR PULL HANDLE

AD-601



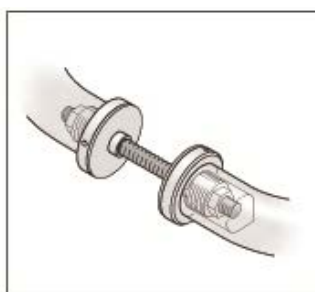
Straight type door pull design was the first member of the door pull handle family , pull tube was required to be ergonomic ally designed to ensure hands could grip safely and purposefully

Material :

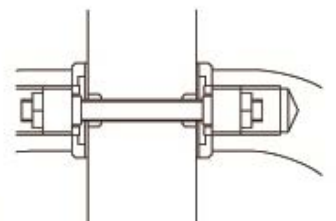
stainless steel grade 304.
stainless steel grade 316.

Finishes :

polished finish .
satin finish.

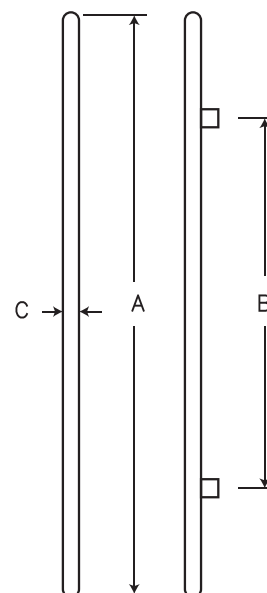
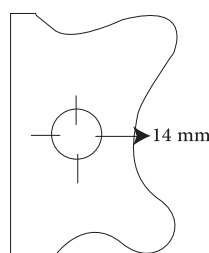


Back-to-Back Fixing



High Quality Handles in elegant designs
Beautiful designs allow easy and comfortable use suited for
all glass types
Product made by: Adler Glaserei GmbH

A	B	C
450mm	300mm	32 Ø
600mm	450mm	32 Ø
800mm	500mm	32 Ø
1000mm	800mm	32 Ø
1200mm	800mm	32 Ø
1400mm	1000mm	32 Ø
1800mm	1200mm	32 Ø



GLASS DOOR PULL HANDLE

AD-602



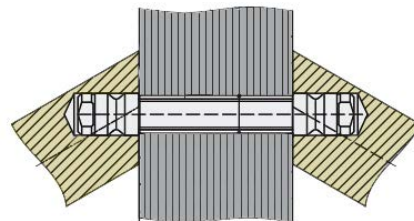
Straight type door pull design with 45° angle spacer , pull tube was required to be ergonomically designed to ensure hands could grip safely and purposefully

Material :

stainless steel grade 304.
stainless steel grade 316.

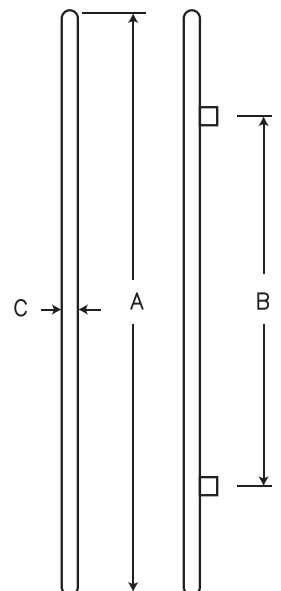
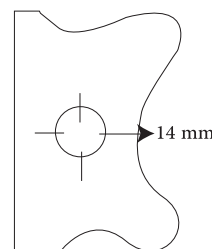
Finishes :

polished finish .
satin finish.



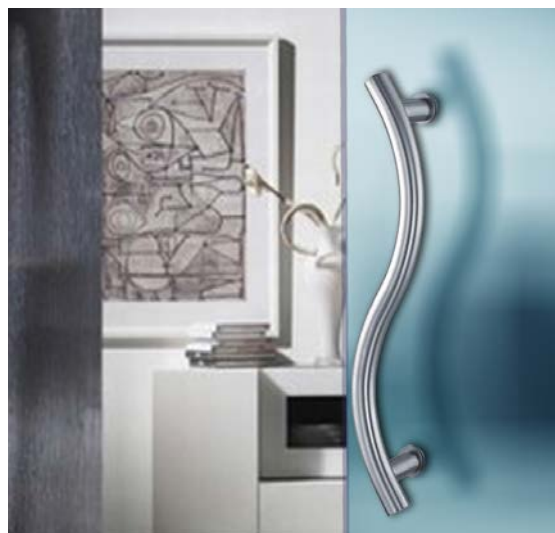
High Quality Handles in elegant designs
Beautiful designs allow easy and comfortable use suited for
all glass types
Product made by: Adler Glaserei GmbH

A	B	C
450mm	300mm	32 Ø
600mm	450mm	32 Ø
1000mm	800mm	32 Ø
1200mm	800mm	32 Ø
1400mm	1000mm	32 Ø
1600mm	1000mm	32 Ø
1800mm	1200mm	32 Ø



GLASS DOOR PULL HANDLE

AD-603



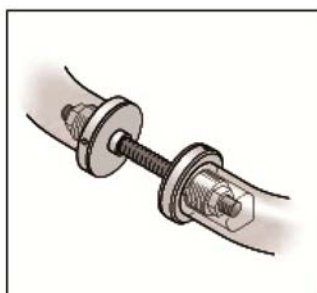
A contemporary design , often specified for double doors .

Material :

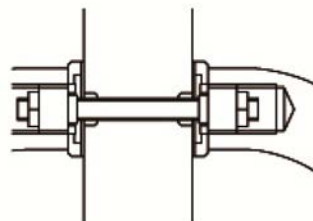
stainless steel grade 304.
stainless steel grade 316.

Finishes :

polished finish .
satin finish.

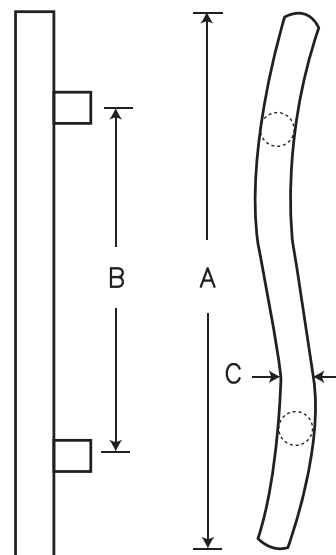
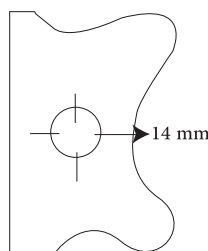


Back-to-Back Fixing



High Quality Handles in elegant designs
Beautiful designs allow easy and comfortable use suited for
all glass types
Product made by: Adler Glaserei GmbH

A	B	C
480mm	300mm	32 Ø
600mm	400mm	32 Ø
800mm	500mm	38 Ø



GLASS DOOR PULL HANDLE

AD-604



A popular two bend design of which is specified mainly for retail installations .

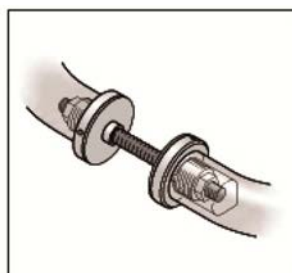
Material :

stainless steel grade 304.
stainless steel grade 316.

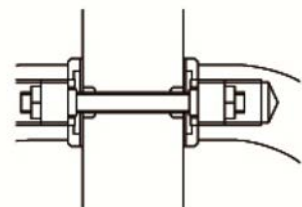
Finishes :

polished finish .
satin finish.

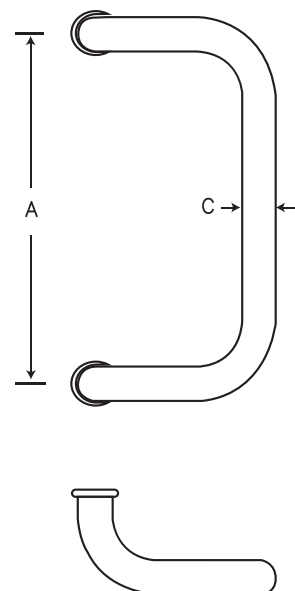
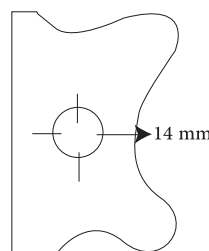
High Quality Handles in elegant designs
Beautiful designs allow easy and comfortable use suited for
all glass types
Product made by: Adler Glaserei GmbH



Back-to-Back Fixing



A	C
300mm	32 Ø
350mm	32 Ø
600mm	32 Ø



GLASS DOOR PULL HANDLE

AD-605



This curved handle offers a really impressive appearance particularly in the polished finish .

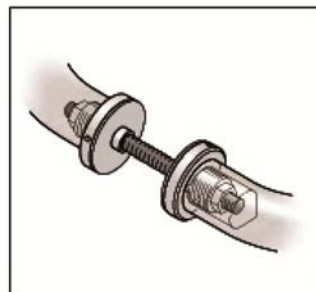
Material :

stainless steel grade 304.
stainless steel grade 316.

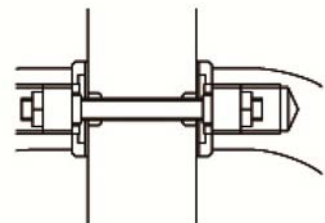
Finishes :

polished finish .
satin finish.

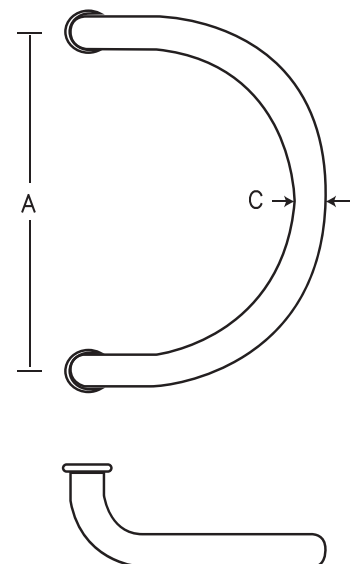
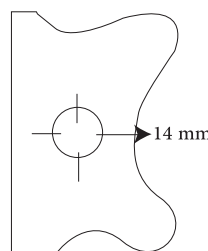
High Quality Handles in elegant designs
Beautiful designs allow easy and comfortable use suited for
all glass types
Product made by: Adler Glaserei GmbH



Back-to-Back Fixing



A	C
300mm	32 Ø
350mm	32 Ø



GLASS DOOR PULL HANDLE

AD-606



a modern . simple design of handle which looks superb in the glass doors

Material :

stainless steel grade 304.
stainless steel grade 316.

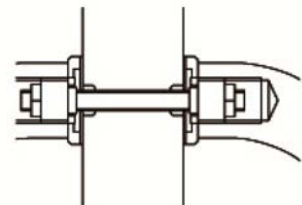
Finishes :

polished finish .
satin finish.

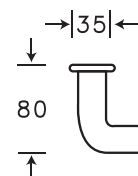
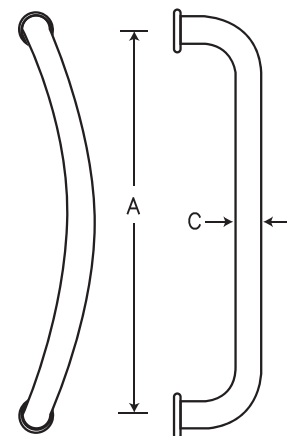
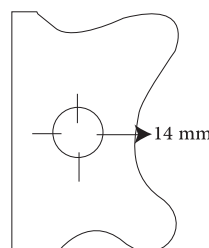
High Quality Handles in elegant designs
Beautiful designs allow easy and comfortable use suited for
all glass types
Product made by: Adler Glaserei GmbH



Back-to-Back Fixing



A	C
300mm	32 Ø
350mm	32 Ø
600mm	32 Ø



GLASS DOOR PULL HANDLE

AD-607



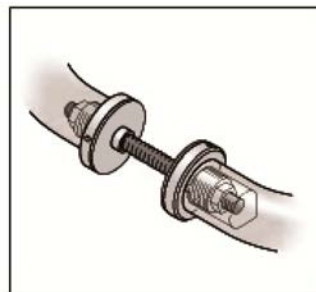
A simple . classic handle designed to complement modern facades .

Material :

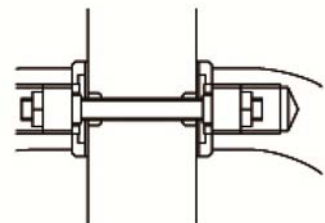
stainless steel grade 304.
stainless steel grade 316.

Finishes :

polished finish .
satin finish.

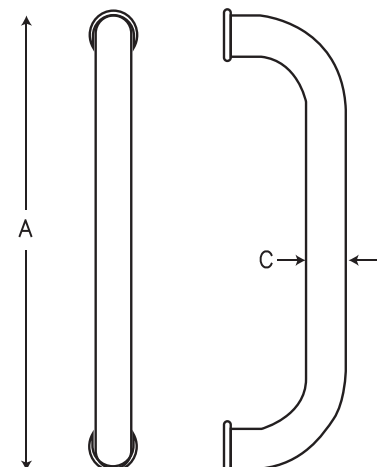
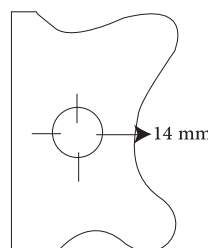


Back-to-Back Fixing



High Quality Handles in elegant designs
Beautiful designs allow easy and comfortable use suited for
all glass types
Product made by: Adler Glaserei GmbH

A	C
200mm	19 Ø
250mm	25 Ø
300mm	32 Ø
350mm	32 Ø



GLASS DOOR PULL HANDLE

AD-608



a classic curved handle which is designed when fitted to double doors to form a nice design

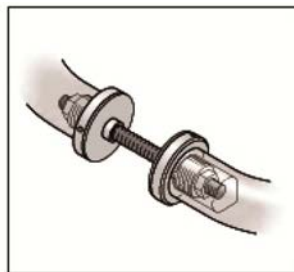
Material :

stainless steel grade 304.
stainless steel grade 316.

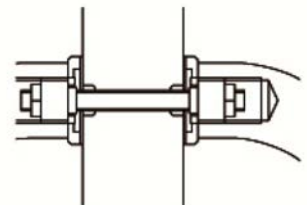
Finishes :

polished finish .
satin finish.

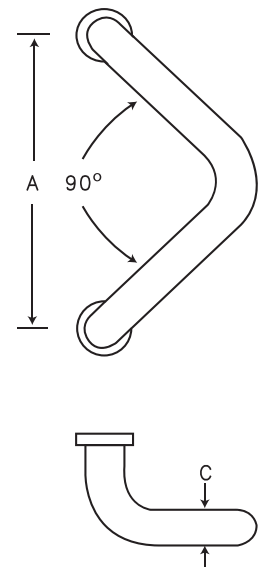
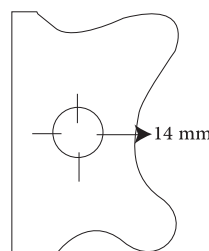
High Quality Handles in elegant designs
Beautiful designs allow easy and comfortable use suited for
all glass types
Product made by: Adler Glaserei GmbH



Back-to-Back Fixing



A	C
300mm	32 Ø
350mm	32 Ø



GLASS DOOR PULL HANDLE

AD-609



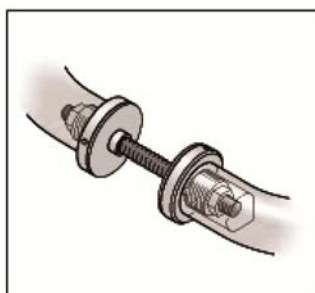
A gently curved handle which can be fitted at 45° across the door.

Material :

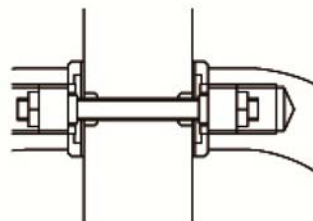
stainless steel grade 304.
stainless steel grade 316.

Finishes :

polished finish .
satin finish.

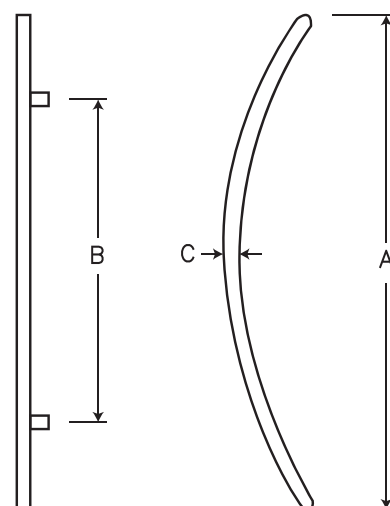
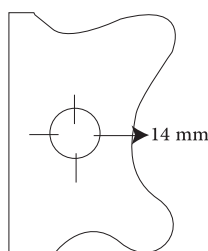


Back-to-Back Fixing



High Quality Handles in elegant designs
Beautiful designs allow easy and comfortable use suited for
all glass types
Product made by: Adler Glaserei GmbH

A	B	C
600mm	400mm	32 Ø
800mm	500mm	32 Ø
1200mm	800mm	32 Ø
1400mm	1000mm	32 Ø

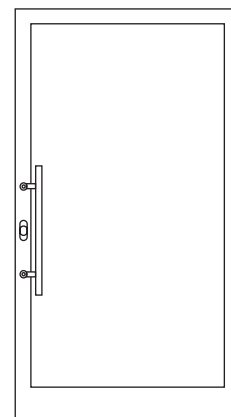
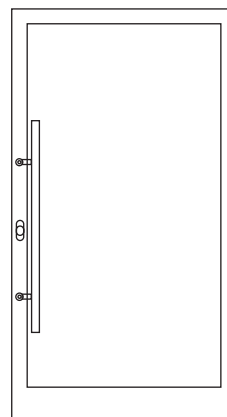


GLASS DOOR PULL HANDLE

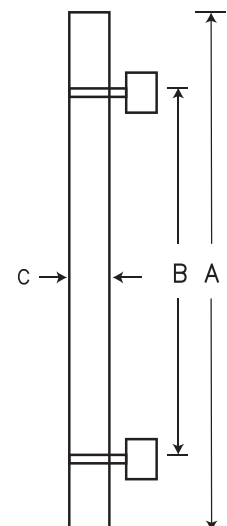
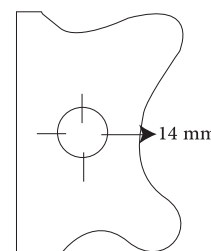
AD-6010



In door pull handle (Ø 38 mm), fixing is by means of laterally offset strap-type brackets. The fastening and gripping sides are separated from one another and hence protect hands. The innovative combination of fixing strap and pull lends the design an airy, vivacious appearance.

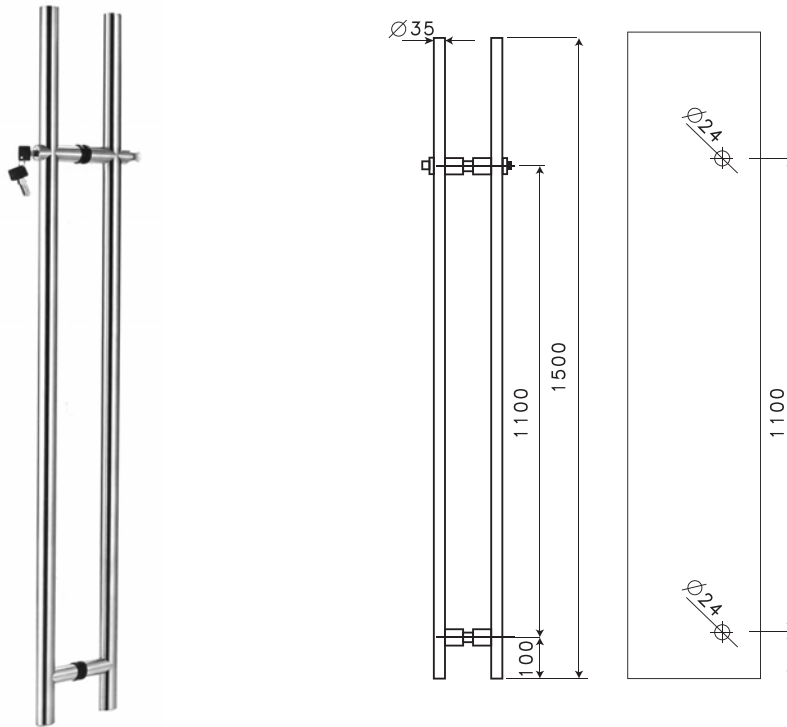


A	B	C
800mm	500mm	38 Ø
1200mm	800mm	38 Ø



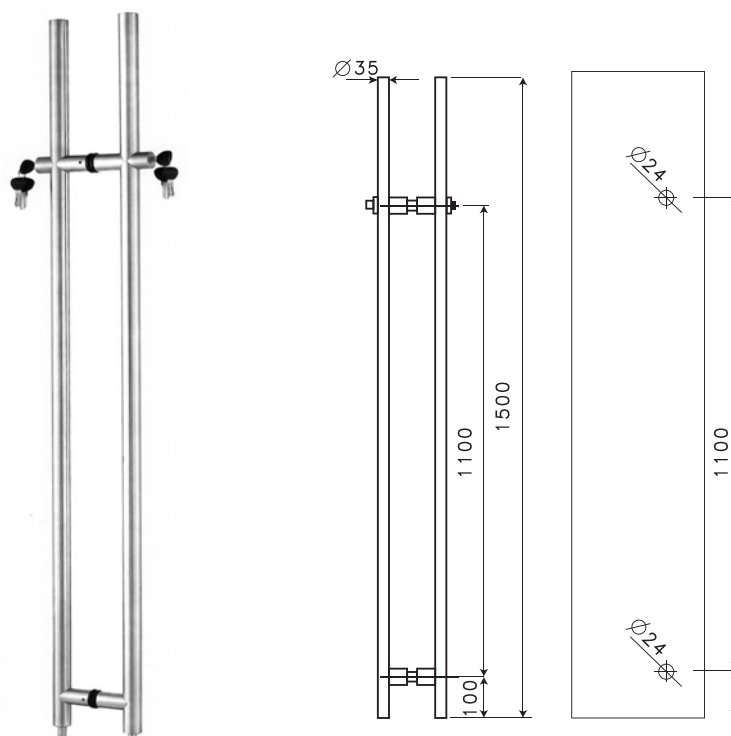
GLASS DOOR PULL HANDLE

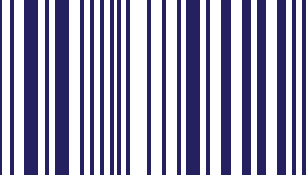
AD-6011



A 'Guardman' style handle suitable for internal swing and sliding doors. The handle features an internal lock (one side key and the other side knob or two side key) which shoots into a floor socket.

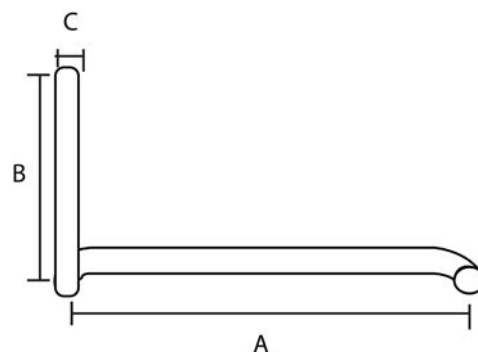
AD-6011





GLASS DOOR PULL HANDLE

AD-6013



Adler Pull Handle/Towel Bar Combinations With Metal Washers are provided with all the hardware required for installation. Each set consists of a pull handle/towel bar set, along with decorative metal back-up washers and plastic washers to protect against glass-to-metal contact.

Material :

stainless steel grade 304.
stainless steel grade 316.

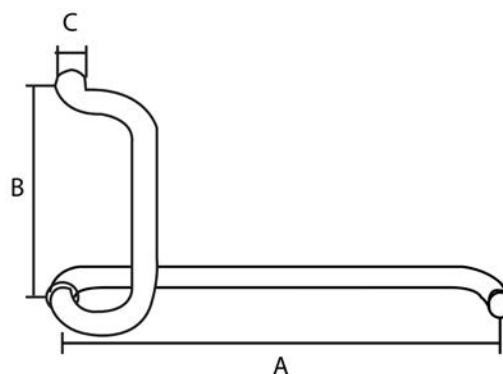
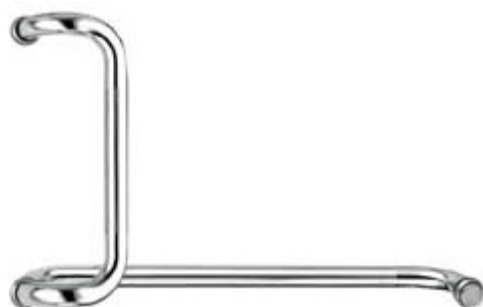
Finishes :

polished finish .
satin finish.

A	B	C
400mm	200mm	25 Ø/19 Ø
450mm	200mm	25 Ø/19 Ø
500mm	200mm	25 Ø/19 Ø
550mm	200mm	25 Ø/19 Ø
600mm	200mm	25 Ø/19 Ø

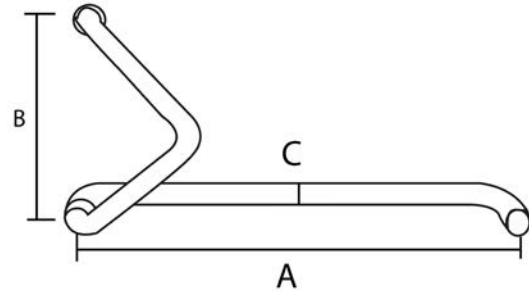
High Quality Handles in elegant designs
Beautiful designs allow easy and comfortable use suited for
all glass types
Product made by: Adler Glaserei GmbH

AD-6013



GLASS DOOR PULL HANDLE

AD-6015



Adler Pull Handle/Towel Bar Combinations With Metal Washers are provided with all the hardware required for installation. Each set consists of a pull handle/towel bar set, along with decorative metal back-up washers and plastic washers to protect against glass-to-metal contact.

Material :

stainless steel grade 304.
stainless steel grade 316.

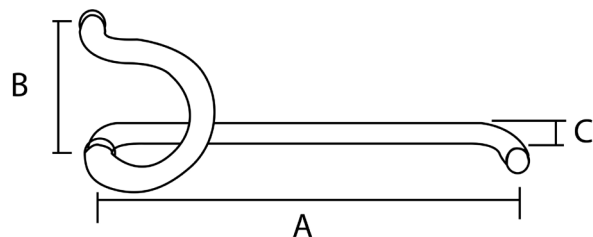
Finishes :

polished finish .
satin finish.

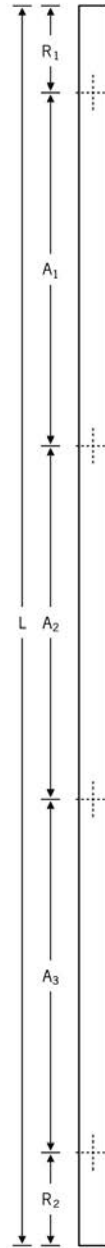
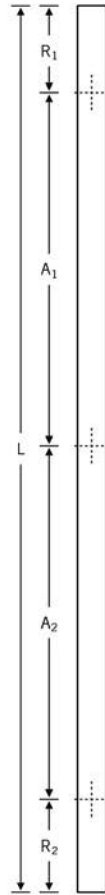
A	B	C
400mm	200mm	25 Ø/19 Ø
450mm	200mm	25 Ø/19 Ø
500mm	200mm	25 Ø/19 Ø
550mm	200mm	25 Ø/19 Ø
600mm	200mm	25 Ø/19 Ø

High Quality Handles in elegant designs
Beautiful designs allow easy and comfortable use suited for
all glass types
Product made by: Adler Glaserei GmbH

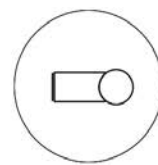
AD-6015



GLASS DOOR PULL HANDLE



To order custom designs in the pull handle series AD-601 Htype please use a copy of this page:
 -Enter the quantity required and overall length in the table below.
 -Then enter details of the distances between brackets and , where applicable, their distance from the end of the handle inmm.



QYT	Overall length L	Distance between brackets			Edge spacing		Fixing method
		A1	A2	A3	R1	R2	